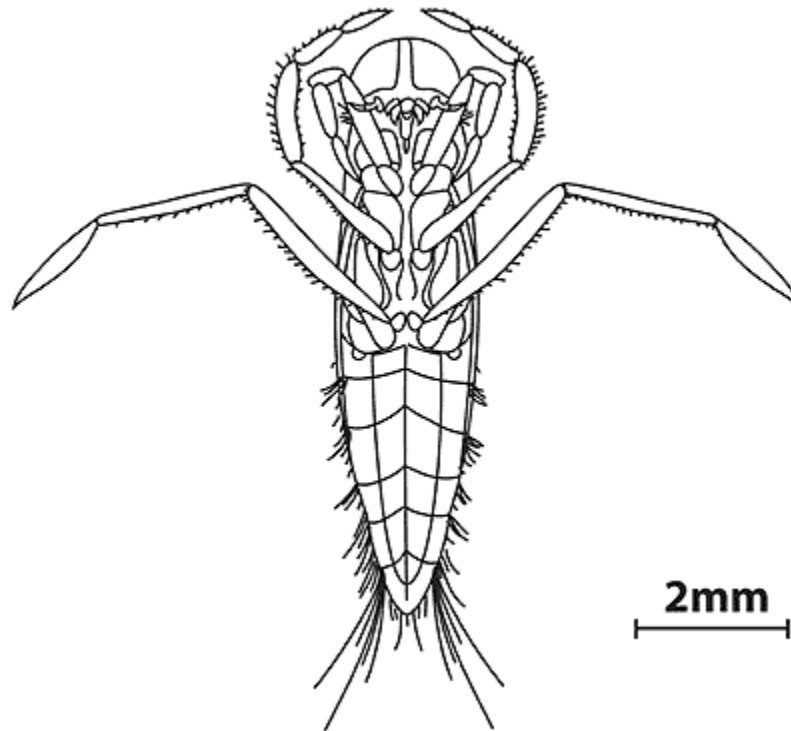


Stream Ecology: Macroinvertebrate Drawing



You have already read through your field study reading material on stream ecology and aquatic insects and made small drawings of various macro-invertebrates. You will now be expected to draw **ONE** of these macro-invertebrates, in extreme detail. You will be making one drawing of an invertebrate of your choice **ON THE BACK OF THIS PAPER.**

You may choose from one of the following (or perhaps of another if you can prove it resides in one of the local watersheds): you may draw the adult or nymph

Stonefly	Mayfly	Midge	Caddisfly	Water Beetle
Dragonfly	Dobsonfly	Damselfly	Alderfly	

Each drawing should note the finer characteristics of your insect. I expect you to correctly draw the number of claws, body segments, antennae, legs, wings and gills of the insect you choose.

I also expect to have you list the Kingdom, Phylum, Class, Order, and Family of your insect. *Your drawings must be accurate for me to accept them for full credit. I will not accept stick drawings!*